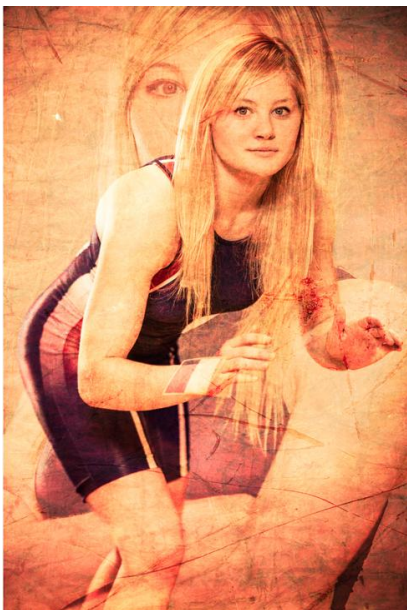


2nd Grand Prix - PARIS

31st january - 1st february 2015

Female - Greco-roman - Free style





INVITATION

French Wrestling Federation has the pleasure to invite your national team
for the international Senior UWW tournament
“ 2nd Grand Prix de Paris Seine Ouest ”
Female / Greco-roman / Free style
31st January/1st February 2015 - Paris (France)

Invited countries: AUT, AZE, BRA, BEL, BLR, BUL, CAN, CHN, CMR, ESP, FIN, GEO, GER, HUN, ITA, IRI, JPN, KAZ, KGZ, KOR, LTU, LAT, MDA, MGL, POL, POR, RUS, SEN, SUI, SRB, SWE, TUR, UKR, USA... **etc**

Contact: Fédération Française de Lutte - FRA@FILA-wrestling.com
Telephone: +33 141 795 910 – Fax: +33 143 684 053

Place of competition:
Palais des sports « *Robert Charpentier* »
4 rue des frères voisins
92130 Issy les Moulineaux

Date: January 31st and February 1st 2015

Entries:
Preliminary entries: before 30st November 2014
Nominative entries: before 31st December 2014

Age / Style: Senior / Female - Greco Roman - Free style.

Weight categories: official UWW categories (+ 2 kg)
FW : 48kg – 53kg – 55kg – 58kg – 60kg – 63kg – 69kg – 75kg
GR : 59kg – 66kg – 71kg – 75kg – 80kg – 85kg – 98kg – 130kg
FS : 57kg – 61kg – 65kg – 70kg -74kg – 86kg – 97kg – 125kg
Each wrestler must have a valid UWW license.

Financial condition on page 6 & 7.

Welcome to Paris!
Alain Bertholom
President of French Wrestling Federation

French Wrestling Federation
2nd Grand Paris Seine Ouest 2015
 Senior – Female / Greco Roman / Free style
 31st January and 1st February 2015 - Paris (France)

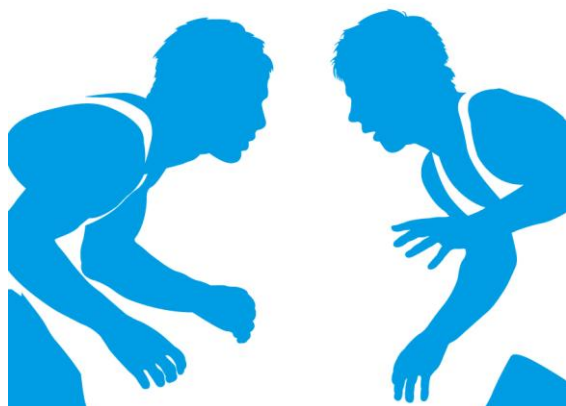
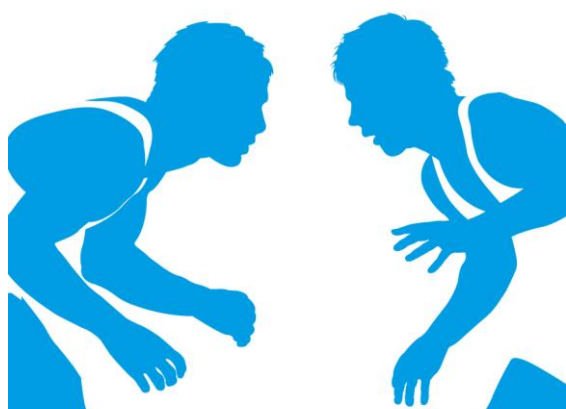
PREVISIONAL PROGRAM

Friday 30th January	12.00	Accreditation – License UWW control
	16.00 - 16.30	Technical conference
	17.00 - 18.00	Medical Control Female: 4 weight categories Greco-roman: 4 weight categories Free style: 4 weight categories
	18.00 - 18.30	Weigh-in Female: 4 weight categories Greco-roman: 4 weight categories Free style: 4 weight categories
	17.00 – 20.00	Dinner
Saturday 31st January	10.00 - 17.00	Qualifications rounds Female: 4 weight categories Greco-roman: 4 weight categories Free style: 4 weight categories
	15.30 - 16.30	Medical Control Female: 4 weight categories Greco-roman: 4 weight categories Free style: 4 weight categories
	16.30 - 17.00	Weigh-in Female: 4 weight categories Greco-roman: 4 weight categories Free style: 4 weight categories
	17.00 - 19.30	Finals (3rd-5th, 1st-2nd) and award ceremonies Female: 4 weight categories Greco-roman: 4 weight categories Free style: 4 weight categories
	19.30	Dinner
Sunday 1st February	10.00 - 17.00	Qualifications rounds Female: 4 weight categories Greco-roman: 4 weight categories Free style: 4 weight categories
	17.00 - 19.30	Finals (3rd-5th, 1st-2nd) and award ceremonies Female: 4 weight categories Greco-roman: 4 weight categories Free style: 4 weight categories
	19.30	Dinner
Monday 2nd February		Departure of the delegations

TRAINING CAMP - olympic center

2 - 6 February 2015

Female - Greco-roman - Free style



INSEP
Olympic center



11 avenue du Tremblay
75012 PARIS
+33 141 744 100
<http://www.insep.fr/>



French Wrestling Federation has the pleasure to invite your national team
for an **International Training Camp** after the
“ **2nd Grand Prix de Paris Seine Ouest** ”
2-6 February 2015 - Paris (France)



INTERNATIONAL SENIOR TRAINING CAMP - INSEP Greco roman / Free style / Female

Organisation	Fédération Française de Lutte 2 rue Louis Pergaud - 94700 MAISONS-ALFORT Tel (+33) 01.41.79.59.10 - Fax (+33) 01.43.68.40.53 FRA@FILA-wrestling.com
Dates	From 2 February 2015 to 6 February 2015 (after lunch)
Training conditions	The teams will train on 6 mats. Sauna, jacuzzi, conditional room, ...
Accomodation	INSEP – Olympic training center 11 avenue du Tremblay - 75012 PARIS +33 141 744 100 - http://www.insep.fr/
Deadline of entries	30 November 2014 (preliminary) 31 December 2014 (nominative)
Costs	<u>Each delegation must pay 75 €</u> per person per day all included (room and meals)
Travel expenses	Transport to the competition from INSEP could be scheduled by the organizer (15€ per person for one way).
Reception Airport	Charles de Gaulle Airport – about 40 minutes from INSEP Orly Airport – about 25 minutes from INSEP



ACCOMMODATION, FOOD & TRANSPORTATION

TWIN ROOM - STANDARD PACKAGE

- All prices per person & per day in a twin room
- Breakfast at the hotel, lunch & dinner at the sport hall

Fri. 30th – Half Board (without lunch)
65 €

Sat. 31st & Sun. 1st – Full Board
75 €

ADDITIONAL OPTIONS

Extra nights, before Fri. 30th

- Per person & per day in a twin room
- Bed & Breakfast only
- No other meal included

50 €

Single room - Extra fee

- Per person and per day
- In addition to twin room price

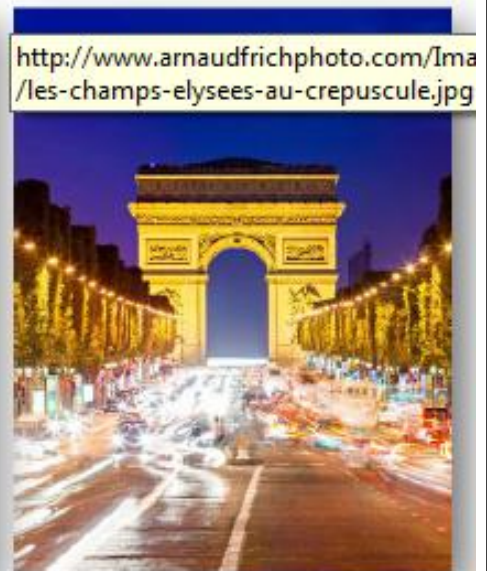
+ 35 €

Fri. 30th – Extra lunch (at the sport hall)
17.50 €

ARRIVAL & DEPARTURE TRANSFER

Airport/Station → Hotel // Hotel → Airport/Station
Price per person 25 €

Check details and conditions on the back !



ACCOMMODATION



- 2* standard including breakfast, private bathroom, TV & unlimited free wi-fi.
 - 15 min. from sport hall with competition shuttles.
 - 5 min. walking from a metro station and a direct line to Paris center.
- Extra nights : bed & breakfast only, no other meal included.**

CATERING



- Lunch & dinner on Friday, Saturday and Sunday at the sport hall.
 - 3-course meals + mineral water.
 - Menus are planned according to athletes' expectations (quality and quantity).
- Extra Friday lunch shall be booked along with the rest of your stay.
Last minute requests will be subject to availability.**

TRANSPORTATION



- Transfers between station/airport and hotel according to your flight details.
- An organization member will welcome you on arrival at the station/airport.
- Your transfer back will be confirmed with you during your stay.

**Our service is valid from Paris stations and ROISSY or ORLY airports.
In case of arrivals at and departure from BEAUVAIS, our service is valid
from Porte Maillot bus station in Paris.
A shuttle from Beauvais to Porte Maillot is provided by the airport company
every 20 minutes, extra cost at your expense.**

**TOURNAMENT ENTRY WILL BE REFUSED IF THE CONDITIONS BELOW
ARE NOT RESPECTED.**

BOOKING CONDITIONS & PAYMENT

Accurate booking instructions will be provided to you shortly. In the meantime, please contact us !
+33 (0)1.49.21.19.50 contact@to-sport.com www.to-sport.com

DEPOSIT

30% deposit (on total amount) to be paid by **November 30th** latest, along with preliminary entries.
Your booking will only be confirmed after receiving the relevant amount.

BALANCE PAYMENT

Balance shall be paid **no later than on January 23rd 2015**.
Accreditations to the tournament will only be granted when the payment is fully completed.

CANCELLATION

Until January 8 th :	Free of charge
From January 9 th to 22 nd :	50% penalty on cancellation
From January 23 rd :	Your booking will be considered as definitive. Total amount due and to be paid so as to enter the competition.

To Sport Bank References

Agency : HSBC FR POISSONNIERE

Bank code: 30056 Branch code: 00066 Account number: 0066 543 4380 Key RIB : 87
IBAN : FR76 3005 6000 6600 6654 3438 087 Swift code : CCFRFRPP

Bank fees at your expense





LUTTE GRÉCO-ROMAINE - LUTTE LIBRE - LUTTE FÉMININE - LUTTE BRETONNE
DISCIPLINES ASSOCIÉES >>> **SAMBO - GRAPPLING**

FÉDÉRATION FRANÇAISE DE LUTTE fondée en 1913 et déclarée le 13 avril 1913 - Agréée par le Ministère de la guerre sous le n° 7681 - Affiliée au CNOSF
Déclaration d'activité n°11 94 08362 94 - Préfecture région Ile-de-France - SIRET : 784 448 706 00043
Siège social : 2 rue Louis Pergaud - 94 706 Maisons-Alfort cedex - Téléphone : 01 41 79 59 10 - Télécopie : 01 43 68 40 53
Courriel : ffl@fflutte.org - Site Internet : www.fflutte.com